



MA MAWI WI CHI ITATA CENTRE
We all work together to help one another.

One Thousand Hampers per Week

That's what we are averaging when it comes to the number of emergency kits we assemble and deliver as part of our **COVID-19** response.

First and foremost, this staggering number should serve as inspiration. Thanks to the remarkable collective efforts of our **staff, volunteers and donors**, we have been able to care for our community members like never before! This kind of outreach and engagement is testament to the importance of **Ma Mawi Wi Chi Itata Centre** and how critical a role we play when it comes to alleviating the strains associated with homelessness, poverty and addiction. Our staff members in particular have been steadfast and tireless in their heart medicine work. They know firsthand the needs of our community. They should hold their heads high and be exceedingly proud of what they have been able to accomplish together!



Working Hard at Children of the Earth High School

That number also serves a reminder that it is imperative to keep this kind of incredible momentum going. We need to continue working and walking side by side to deliver our love and care to our most vulnerable Citizens. Our message has and always will be ***we all work together to help one another!*** We must never lose sight of this as we enter the 6th month of our response to this global health crisis.

It was another incredibly busy week at our satellite emergency kit distribution centre at **Children of the Earth High School**. Thousands of kits were assembled and distributed to our Citizens. Along with the staggering numbers, we continually learn about what our community members need most during this time of isolation and responsible distancing.

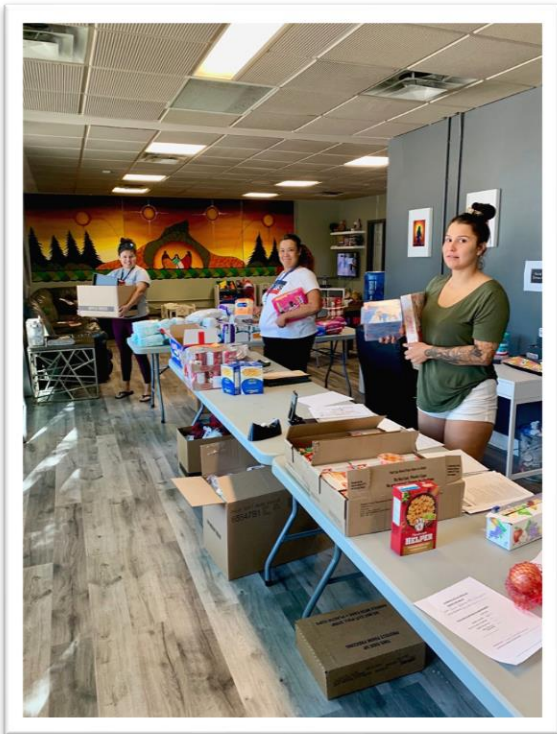
This week we want to include some important items that you may not have considered up until now. Along with food and hygiene staples, we want to highlight the need for **medicines** used in **ceremony** and reflection such as **sage, cedar and sweetgrass**. It cannot be overstated how vital and beneficial ceremony can be when it comes to maintaining emotional health at this time. If you have any kind of donation to help us with our outreach, please call **204-925 0300**.



Smudge bundle at our King Street location

Strengthening Children and Families... Investing in Our Future

Meanwhile our regular programming continues to return with a safe and responsible approach to our “new normal.” **The Family Group Conferencing (FGC)** team has been exceedingly busy as staff members do



FGC Mentors Assembling Hampers

everything they possibly can to support our families. **FGC Mentors** are striving to make anywhere from **75-100** contacts per week with their assigned families. Their outreach is taking on varied forms including the delivery of a food hampers, baby needs and self care packages along with socially distanced wellness visits. We have also been helping our families by providing toys and activity items to assist with keeping their children busy during this challenging time. When it comes to our **FGC department**, we would be extremely grateful for applicable donations including:

- **small swimming pools**
- **water hoses**
- **sprinklers**
- **balls**
- **children’s slides**
- **basket-ball hoops**
- **toy trucks**
- **play houses**
- **Netflix and XBOX gift cards**
- **activity books and crayons**
- **board games**

It is crucial that our families know we are here for them and that we will assist in creating a fun and safe environment for their children to avoid the potential pitfalls associated with isolation and feeling overwhelmed, We are very fortunate and honoured to have such amazing **FGC mentors** who exemplify the wonderful heart medicine work we have been gifted to do!

It is that kind of work and approach that we are all embracing here at **Ma Mawi Wi Chi Itata Centre**. We are committed to remaining vigilant and united in our efforts! You can also rest assured that we will emerge strong, healthy and vibrant. By doing everything we possible can to strengthen our Children, Youth and Families, we know that we will overcome this latest obstacle in our long and storied histories. Indigenous people are survivors and this time in our journey will be no exception.



Miigwetch, Ekosani, Wopida, Thank you, Marci and Merci!